

DRAWING NUMBER  
51/148

# GLENEAGLES PLAT THREE

## GOLF COURSE, PART OF COVENTRY, A P.U.D.

SITUATE IN SECTION 21, TOWNSHIP 46 SOUTH, RANGE 42 EAST,  
PALM BEACH COUNTY, FLORIDA, BEING A REPLAT OF A PORTION  
OF GLENEAGLES PLAT ONE, (P.B. 50, P. 63 - 65).

SHEET 4 OF 4

# 148

STATE OF FLORIDA  
COUNTY OF PALM BEACH  
THIS PLAT WAS FILED FOR  
RECORD AT \_\_\_\_\_  
THIS \_\_\_\_\_ DAY OF \_\_\_\_\_  
AD, 1984 AND DULY RECORDED  
IN PLAT BOOK \_\_\_\_\_ ON PAGES  
AND \_\_\_\_\_  
JOHN B. DUNKLE, CLERK  
BY: \_\_\_\_\_, D.C.

DRAWING NUMBER

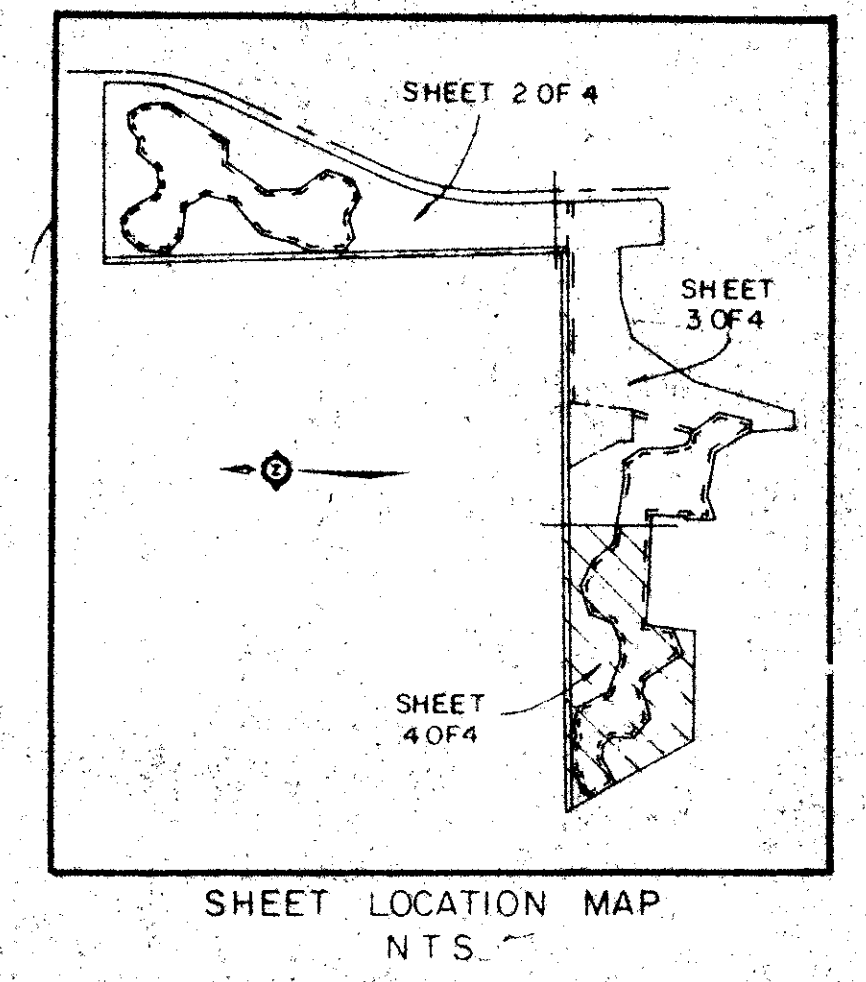
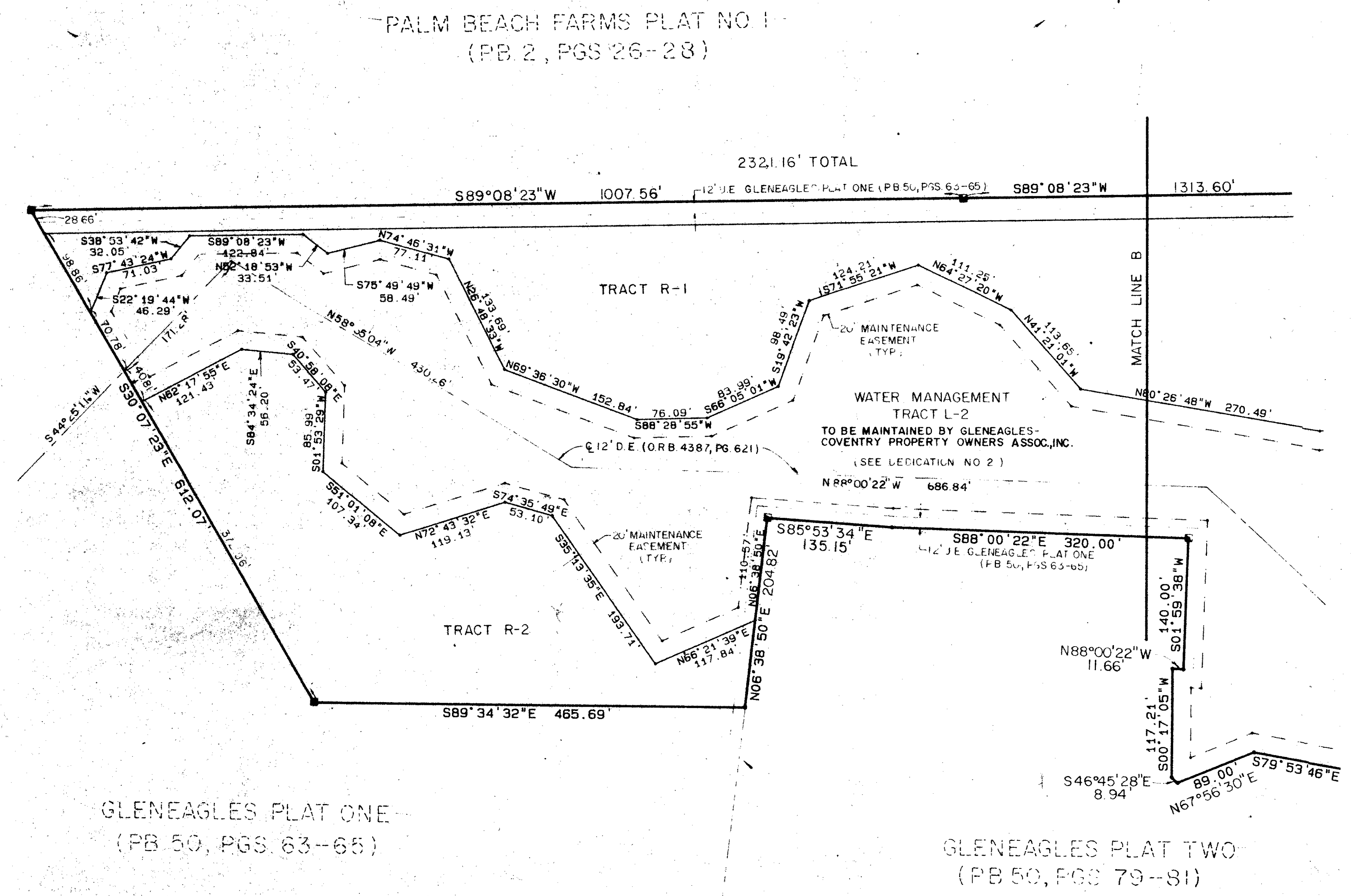
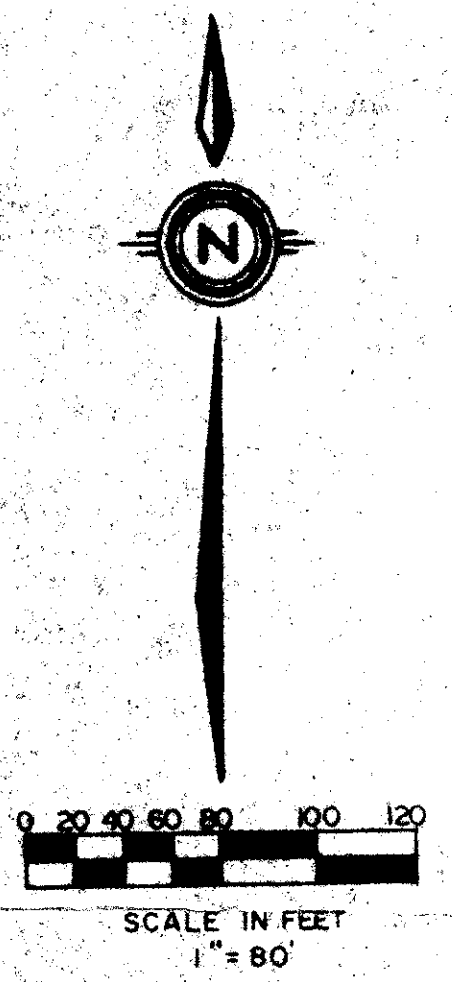
DRAWING NUMBER

DRAWING NUMBER

PLAN HOLD CORPORATION • IRVINE, CALIFORNIA  
REORDER BY NUMBER 0754P

PLAN HOLD CORPORATION • IRVINE, CALIFORNIA  
REORDER BY NUMBER 0754P

PLAN HOLD CORPORATION • IRVINE, CALIFORNIA  
REORDER BY NUMBER 0754P



0230-301

51/148

Meridian		WEST PALM BEACH, FLORIDA	
Surveying and mapping inc.			
DRAWN	MEH	DATE	JAN 1985
CHECKED	R.A.H	SCALE	1" = 80'
DRAWING NO	84-P-115	GLENEAGLES PLAT THREE SEC 21, TWP. 46 S., RGE. 42 E.	